

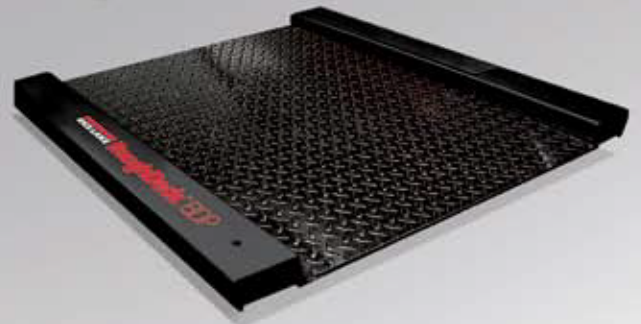
PORTABLE

FLOOR SCALES

DeckHand™

BenchMark™ HDP

RoughDeck® BDP



www.nascoop.com

RoughDeck® BDP


BARREL, DRUM & PALLET SCALE

Portability and Flexibility go Hand-in-Hand with RoughDeck®


The RoughDeck® BDP can be used as a stationary or portable scale and features a low-profile design that allows optional access ramps to sit flush with the ground for smooth loading of barrels and drums. The BDP is equipped with live side rails so large items and pallets that exceed the platform dimensions can be accurately weighed.

The stationary BDP can be easily converted into a portable scale with the optional portability kit. The kit is compact and sits below the live side rails. The caster-engaging mechanism in the portability frame permits operators to effortlessly move the BDP from one location to another. When ramps are attached to the portability frame, the hinges allow the operator to rest the ramps on the scale platform while in-motion.

The BDP can be paired with any Rice Lake indicator. The indicator is conveniently attached to the portability frame pedestal, which is separate from the live weighing platform, eliminating interference when zeroing the scale.



The portability frame and caster engaging mechanism are below the scale's live rails for unconfined weighing of pallets and other large items.



Lifting mechanism shown in upright position for portability

Optional access ramps

Brackets for mounting hinged access ramps

BenchMark™ HDP

PORTABLE PLATFORM SCALE

Stainless Steel Scale Cover makes the BenchMark™ HDP a polished traveling performer

The BenchMark™ HDP portable platform scale, with capacities up to 500lbs, is the ideal option for lighter industrial and commercial applications. Choose between casters or large rear-mounted wheels. The 304 stainless steel cover is as durable as it is sleek.

This NTEP approved scale is designed with a sturdy mild steel base. The column at the back of the scale serves as both a handle for moving the unit and a stand for mounting any of several Rice Lake optional indicators: IQ plus® 355, IQ plus 390, or IQ plus 590.



DeckHand™

PORTABLE FLOOR SCALE

The handy DeckHand™ weighs and rolls anywhere

Move the DeckHand to any part of a facility and be instantly ready to weigh accurately. The platform is designed to weigh perfectly on all corners. Off-center product loading will not affect weighing accuracy.

DeckHand wheels only touch the floor when the unit is tilted back for movement allowing the weighing platform to remain stable on uneven floors.

Partner this scale with one of Rice Lake's battery-operated indicators. Install the IQ plus® 390-DC or IQ plus® 590-DC for a clear view of the weight no matter where the scale is located.

All models on this page are shown with optional indicators.

Shown with an optional ramp, allowing barrels and other large objects to be easily moved on and off the scale.



PORTABLE FLOOR SCALES

Installation Options Add Versatility...

- Indicator floor stand
- Digital weight indicators
- Anchor plates
- Access ramps

All installation options are available in mild or stainless steel.



RoughDeck® BDP

Specifications

Height:
1.625" without portability frame; 1.94" with portability frame (distance from floor to top of center weighing surface)

Approvals:
NTEP CC#03-060

Warranty:
3-year limited warranty

Options/Accessories

- Portability kit includes: frame, two swivel and two fixed zinc plated steel NSF approved wheels (75 lb max capacity) and indicator stand
- Access ramps (for stationary scale or portable scale)

Applications

- Barrel, drum and pallet weighing

Dimension/Capacities

Size (W x L x H)	Capacity
Mild Steel with Alloy Steel Environmentally Sealed Load Cells	
30" x 31"	1000 lb (500 kg)
30" x 31"	2500 lb (1000 kg)
36" x 37"	1000 lb (500 kg)
36" x 37"	2500 lb (1000 kg)
Stainless Steel with Stainless Steel Environmentally Sealed Load Cells	
30" x 31"	1000 lb (500 kg)
30" x 31"	2500 lb (1000 kg)
36" x 37"	1000 lb (500 kg)
36" x 37"	2500 lb (1000 kg)
Stainless Steel with Stainless Steel Welded-seal (IP67) Load Cells	
30" x 31"	1000 lb (500 kg)
30" x 31"	2500 lb (1000 kg)
36" x 37"	1000 lb (500 kg)
36" x 37"	2500 lb (1000 kg)

Standard Features

- Live side rails
- 30" x 31" or 36" x 37" weighing surface (not including side rails)
- Top Access TuffSeal® JB4SS Stainless Steel Junction Box

BenchMark™ HDP

Specifications

Load Cell,
NTEP CERTIFIED:
Aluminum, environmentally sealed

Overload Protection:
Five-point, independently adjusted

Approvals:
NTEP Certified 06-010A1, 5000 div. Measurement Canada Approved AM-5625

Warranty:
2-year limited warranty

Applications

- Material handling
- Parts counting
- Airport baggage

Dimension/Capacities

Platform Dimensions (L x W x H)	Capacity
Wheel Model	
24 in x 24 in x 8.75 in	250 lb (125 kg)
24 in x 24 in x 8.75 in	500 lb (225 kg)
Caster Model	
24 in x 24 in x 9.31 in	250 lb (125 kg)
24 in x 24 in x 9.31 in	500 lb (225 kg)

Standard Features

- Mild steel base, 304 stainless steel cover

Wheel Model

- Polyurethane rubber leveling feet with stainless steel stems
- 8 in diameter preformed rubber wheels with ball bearing

Caster Model

- 3 1/2 in diameter preformed rubber casters, two fixed, two swivel with lock

DeckHand™

Specifications

Height:
4.5' H

Approvals:
NTEP, CC# 98-004; Measurement Canada approved, AM-5218

Warranty:
1-year limited warranty

Options/Accessories

- Clam shell for additional load cell protection
- Ramp

Applications

- Material handling

Dimension/Capacities

Size (W x L x H)	Capacity	Est. Ship WT
Mild Steel		
with aluminum environmentally sealed load cells		
31" x 41" x 4.5"	500 lb (250 kg)	336 lb
31" x 41" x 4.5"	1000 lb (500 kg)	356 lb
31" x 41" x 4.5"	2000 lb (1000 kg)	373 lb
Stainless Steel		
with aluminum environmentally sealed load cells		
31" x 41" x 4.5"	500 lb (250 kg)	336 lb
31" x 41" x 4.5"	1000 lb (500 kg)	356 lb
31" x 41" x 4.5"	2000 lb (1000 kg)	373 lb

Standard Features

- Treaded top plate
- Large rubber wheels simplify movement on uneven floors
- Aluminum load cells

Your Rice Lake Weighing Systems distributor is:



2031 Reiser Ave. SE • New Philadelphia, OH 44663 • USA
TEL: 800-321-3396 • FAX: 800-992-6679 • www.nascoop.com



© 2009 Rice Lake Weighing Systems PN 80758 10/09
Specifications subject to change without notice